

# Baines' Bulletin

April 4, 2020

## School Update: April

Dear Parents and Carers,  
I hope you are all well and are managing to cope during this challenging time. **School remains open to the children of Key Workers and those that need a place for their children, because they are not able to look after their children at home.** School is open during the two week Easter holiday and both Bank Holidays, unless you tell us you don't need us to be open. **Please let us know immediately.** The Government advice is still to stay at home to ensure that you stay safe. Advice still states that people should only go out of their homes if it is **ABSOLUTELY NECESSARY**: if you **MUST** work because you are a Keyworker, to buy food, take a daily walk/run/bike ride, or to get medicines or medical help. **DO NOT** gather with friends or family at this time.

**PLEASE follow this guidance and keep your loved ones safe.**

For the latest advice on Covid-19 please go to : [www.gov.uk/coronavirus](http://www.gov.uk/coronavirus)

### Communication from school

School will continue to communicate with our families:

#### **On a daily basis:**

- via **Parentapp**, email or a phonecall if that is necessary
- via our **Twitter** account @bainesendowed **If you are not following us, please do, to see new information daily, which is of interest to our school community, including recommended activities for our pupils and supportive messages and information for families.**

- via **Class Dojo** (Reception and KS1)
- **Google Classroom** (KS2)

#### **On a monthly basis:**

- via the **Monthly Newsletter**

*We now have over 400 users on our Parentapp. If you still need to register and require any help getting onto the app, please contact the office on 01253 762532.*

### **If you have booked places at school...**

**Please ensure that you complete and return the Keyworker Form that you have been sent**, to let school know whether you need a place at school for your child over the Easter holiday period. As I am bringing staff into school from their own homes and families, it is crucial that school knows how many staff are needed each day. As of Friday 3<sup>rd</sup> April, only one third of all families who have asked for places for the next two weeks have confirmed that they still require those places.

### **School Expectations Over the Easter Holiday Period**

#### ***Online Classrooms and School Work***

Over the Easter break, it is not expected that children will continue with their school work, so class teachers and teaching assistants have posted suggested fun activities for the children to enjoy with their families or independently. Teachers will not be working over the Easter break, therefore they will not be online daily as they have been during school weeks. My teaching staff have been working longer days than usual, in order to maintain their online classrooms, therefore I ask that you all understand the need to allow them to recharge their batteries during this Easter holiday. They will be back online on Monday 20<sup>th</sup> April, when school activities will start again.

### ***School Opening Hours Over Easter***

School will be open for calls and email enquiries over the two week Easter holiday. We will also be open for Keyworker and children who have a place at school.

Our opening hours are:

For calls and enquiries: 9:00 a.m. – 3:00 p.m.

For children attending school:

Early Birds opens at 7:45 a.m.

School opens at 8:45 a.m.

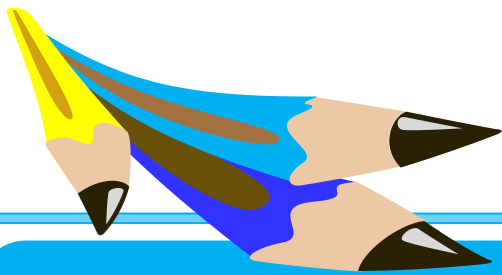
School closes at 3:15 p.m.

Bridges closes at 4:30 p.m.

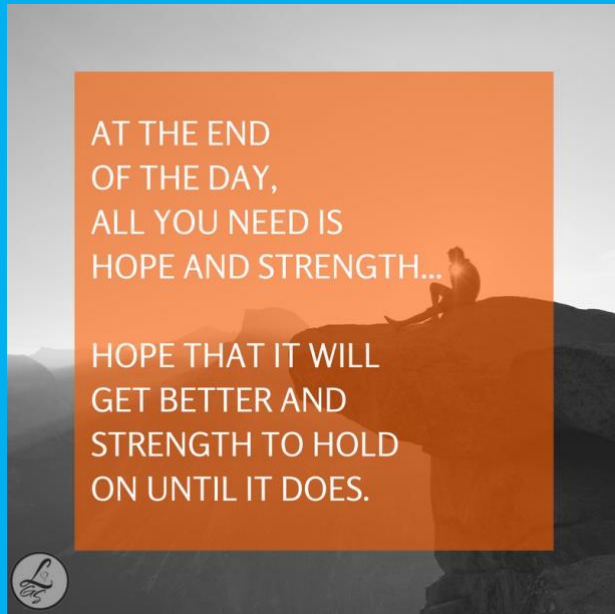
**PLEASE collect your children on time, as staff need to leave the building at the same time as the children. Thank you.**

WHEN YOU CAN'T FIND  
THE SUNSHINE,  
BE THE SUNSHINE.



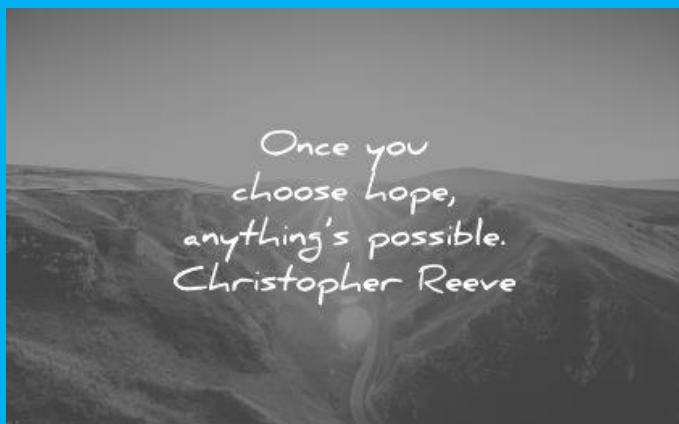


*Always have hope for the future...*



### Learning Packs

If you are experiencing difficulty with the online learning on Google Classroom or Class Dojo, for whatever reason, be it technical difficulties or not having enough devices for all of your children at home, **please contact the school office** and we will post you out an appropriate Year Group Learning Pack for your child. The packs have been made by classteachers and they contain work is linked to the National Curriculum for your child's Year Group, so they will be able to continue with their learning at



### Free School Meals

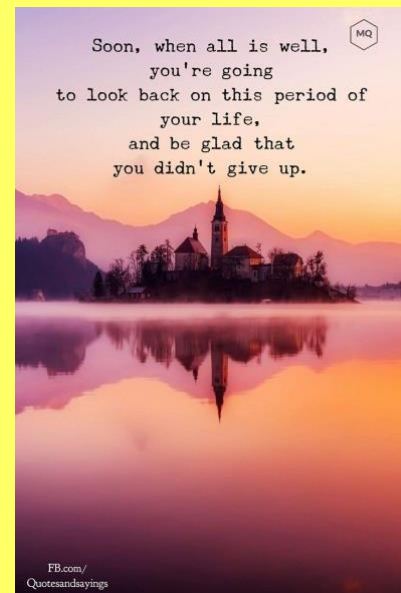
The Government are advising schools on appropriate ways of ensuring that our FSM children receive their meal entitlement. If your child is entitled to a free school meal, we will keep you informed as to how that will be provided. Please ensure we have your most up-to-date contact details at school. Thank you.

### Nursery Parents and Carers

Please can you check your emails for a link to Tapestry, so that Nursery can send you weekly activities to share with your child. If you have not received an email, please contact school on 01253 762532 or email us at [beadmin@cidari.co.uk](mailto:beadmin@cidari.co.uk).

### Refunds for Any Payments Already Made to School

If you have paid for a school trip, including PGL next year, or have paid for any school activities, lunches, Nursery places, or anything else that would require a refund, we are working to find out about payment refunds/adjustments etc. we can secure for our parents/carers. We ask for your patience whilst our Admin Team work on this matter. We assure you that we will work for the best result on your behalf.



*At this moment in time, all planned school events are suspended until further notice. I will let parents/carers know as soon as events change and school is able to reopen as usual. I do not expect that to be in the near future.*

**We will continue to do our very best to support all of our families at this unusual time. Thank you for your support and understanding.**

**God bless you all and keep you all safe.  
Mrs. Rusling**

***Our value next half term is Friendship***